

**NOLL
& TAM**
ARCHITECTS



COLLEGE OF
ALAMEDA

UNCOMMON SPACES FOR THE COMMON GOOD.

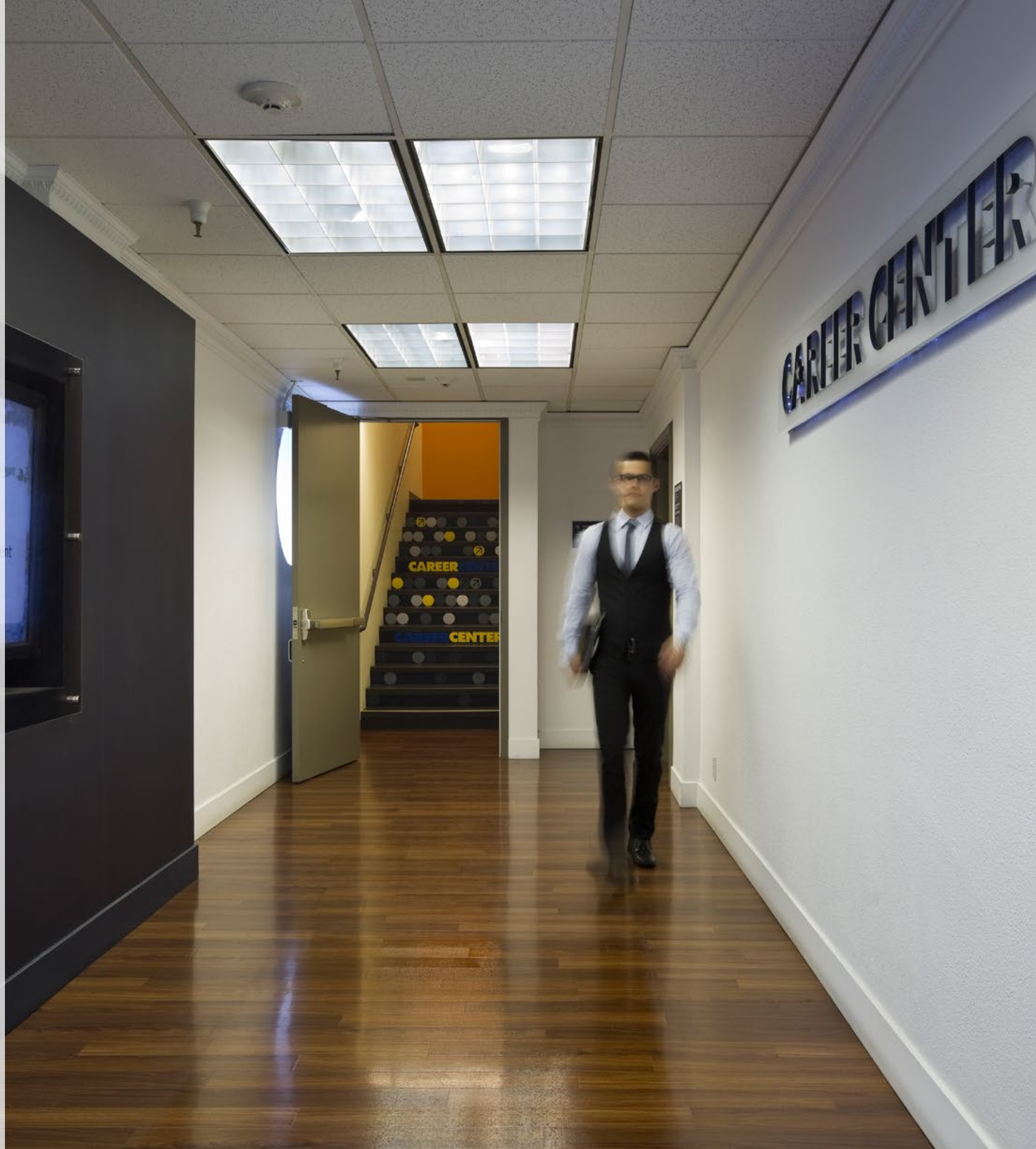


HELLO

Noll & Tam Architects' work reflects a dedication to the particular people and places that make our projects unique. Christopher Noll and Janet Tam founded the firm in 1992 to establish a talented studio of architects that pursued the ideal of active community involvement and environmentally responsive design. Today, we have 43 creative and energetic staff members, including 17 LEED Accredited Professionals. For more than 25 years Noll & Tam Architects has focused on the design of educational, institutional, and public buildings – libraries, community/recreational centers, civic centers, public safety buildings, and universities and community college facilities.

UC BERKELEY CAREER CENTER TENANT IMPROVEMENTS

As part of its initiative to promote student and alumni career development, the UC Berkeley Career Center relocated to an existing building across from the new Eshleman Hall at Sproul Plaza. Noll & Tam collaborated with the Career Center and UC Berkeley Capital Projects to test fit programs that transformed the new location into a welcoming, dynamic space. Our final design captured a contemporary character that is appealing to students, alumni, and visiting companies.









UC BERKELEY TANG CENTER RENOVATIONS

The goal of Noll & Tam's renovation of the second floor of the Tang Center was to consolidate existing offices to accommodate off-site staff, and reconfigure and expand the Primary Care clinic. A new HVAC system and energy efficient LED lighting reduced energy consumption and met Title 24 requirements. We then renovated and expanded the 2,300-square-foot existing pharmacy and waiting area in order to meet current regulations and effectively convert the existing area into more efficient and secure spaces for pharmacy staff and clinicians, allowing them to expand and improve Pharmacy services to students.

UC BERKELEY STUDENT COMMUNITY CENTER RENOVATIONS

Noll & Tam supported prime architect Moore Ruble Yudell in renovating the existing facilities at Lower Sproul Plaza into a revitalized, state-of-the-art student services hub for the UC Berkeley community. MRY led the replacement of Eshleman Hall while Noll & Tam assisted with renovations to Anthony Hall, Cesar Chavez Student Center, and areas of MLK Student Union. Noll & Tam's scope included exterior and interior renovation, seismic and accessibility upgrades, electrical, lighting, AV, and data upgrades, and restroom improvements, all on a very tight budget. We worked closely with the contractor and the CM for this large, student-funded transformation of the historic student center.



STUDENT LEARNING CENTER

Seek Knowledge • Locate Passion • Change the World







UC BERKELEY WEILL NEUROHUB EAST

Noll & Tam Architects is working with UC Berkeley to carve out an identity for the NeuroHub East in the soon to be re-named Weill Hall. This will be accomplished by unifying the interior finishes on the first and second floors and updating the signage, wayfinding elements, acoustics and lighting. Our team will re-configure the building entry and lobby to support informal collaboration and break-out spaces. Existing conference spaces will be expanded and enhanced including the addition of a sensory garden for outdoor break-out spaces.

UC BERKELEY BANCROFT LIBRARY

Noll & Tam served as the Associate Architect with Ratcliff (Prime Architect) for \$42M in seismic and programmatic improvements to The Bancroft Library, which houses UC Berkeley's rare book and manuscript collections. The scope of work included a seismic upgrade of 6 floors as well as a complete re-design of the building's interior to meet current and projected needs. The main goals were to improve the visibility of this amazing rare collection of materials, reorganize all Bancroft Library departments, provide expanded and specialized storage facilities, and establish a new interior connection to the Main Doe Library. The project was a public-private partnership, funded by the state and private donors.

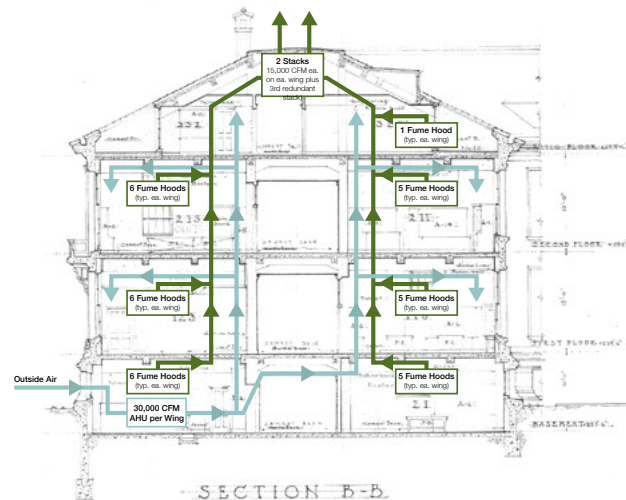
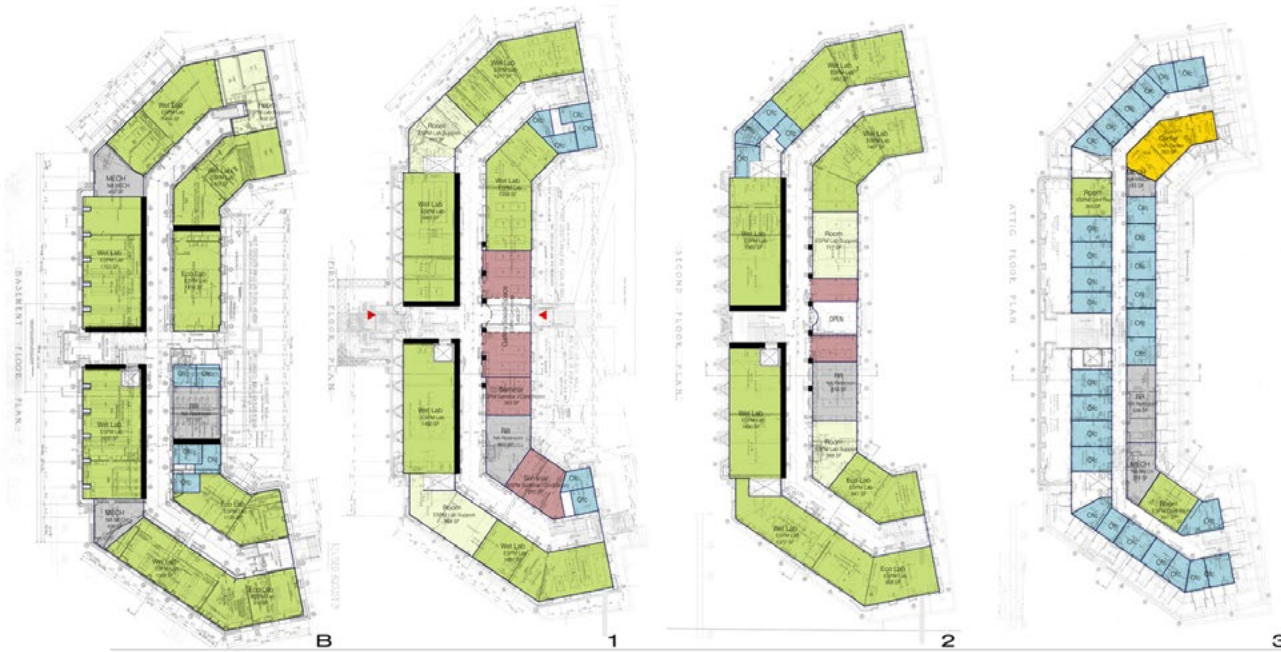






UC BERKELEY COLLEGE OF NATURAL RESOURCES MASTER PLAN

Noll & Tam worked closely with the College of Natural Resources and the University's planning team to develop a 20-year Strategic Master Plan that reflects the mission of the College. Key issues include re-using historic buildings, advancing multi-disciplinary ecological learning and research, and remaining fiscally responsible. The master plan includes design concepts that will help the College use its facilities as a demonstration of ecological sustainability and establishes capital campaign fundraising goals for a phased implementation.



UC BOTANICAL GARDENS DESERT GREENHOUSE

Open to the public as a display and educational facility, this technically sophisticated greenhouse is also home to a research area used for the study of rare desert plants. Noll & Tam Architects designed a 3,000-square-foot computer controlled greenhouse with cooling and shading functions, a central aisle for public viewing, and a public reception area for special displays and fundraising receptions. A public restroom building was also designed to accommodate staff and the public. Due to the delicate and rare nature of these plants, the design took into consideration the need for increased building and plant security.



The Evolution of Cactaceae Botanical Illustrations
The cactaceae family is a diverse group of plants that has evolved over time. This display shows the evolution of botanical illustrations for cactaceae plants, from the early days of simple line drawings to the more detailed and colorful illustrations of today. The display includes a timeline of botanical illustrations and a list of key cactaceae species.

Key Cactaceae Species

- Cholla
- Saguaro
- Cholla
- Saguaro
- Cholla
- Saguaro

Arid Regions of the Earth

The Earth's landmasses are divided into several major regions and sub-regions. Arid regions, which cover about 25% of the Earth's surface, are found in several major regions, including the Americas, Europe, and Asia. Arid regions are characterized by low precipitation and high evaporation rates. The world's major arid regions are highlighted in red on the map.

Major Arid Regions

- Europe
- Asia
- Americas
- Australia



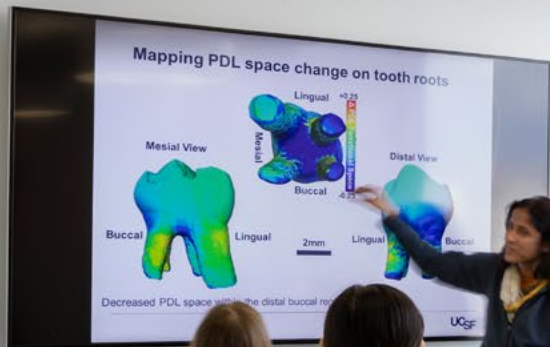


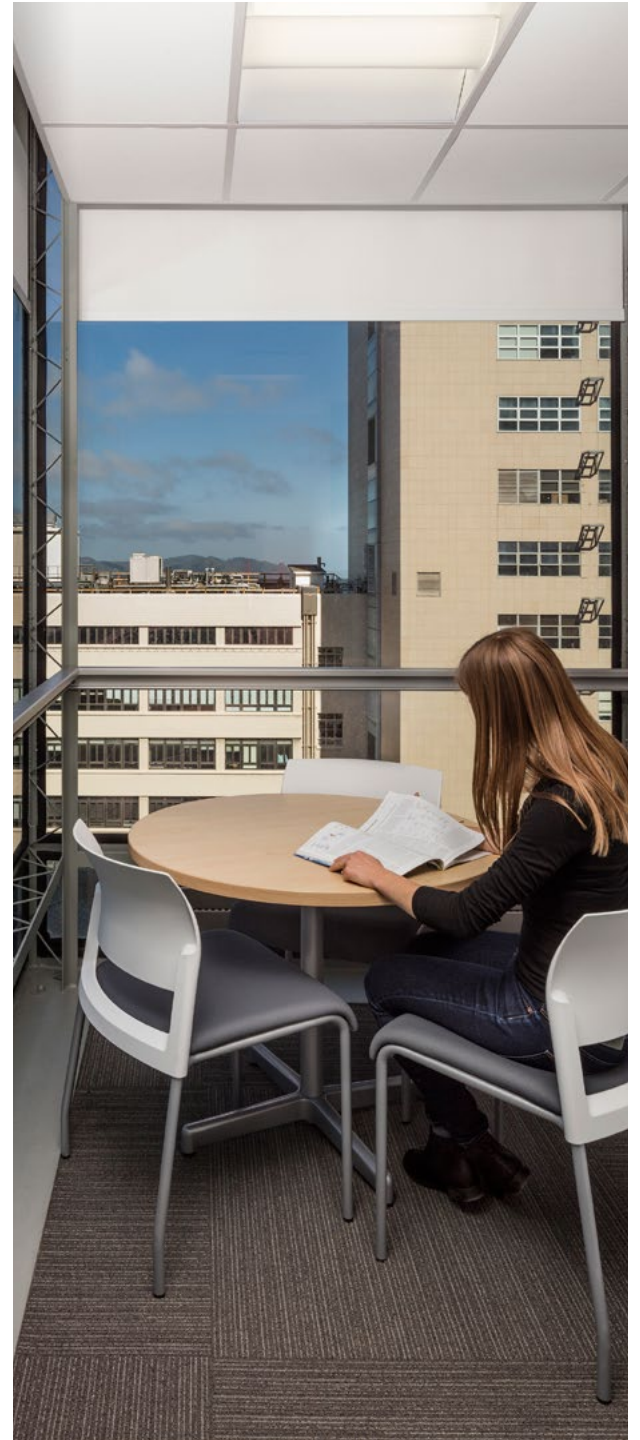


UCSF HEALTH SCIENCE INSTRUCTION & RESEARCH RENOVATION

The HSIR project provides the next step in UCSF Laboratory Design for the HSIR Towers to serve the needs of the current and future researchers for the School of Dentistry and the School of Medicine.

The \$29M project was a full seismic retrofit and renovation of multiple floors of the Health Science Instruction & Research (HSIR) towers. HSIR towers are comprised of the Health Science West (HSW) and Health Science East (HSE) towers. The full and partial floor renovations included demolition of existing spaces and build out of new laboratory and support spaces.





STANFORD UNIVERSITY DAVID RUMSEY MAP CENTER

The David Rumsey Map Center is a unique collections-based research center in the Stanford University Library that enables and promotes interdisciplinary scholarship by enabling the use of cartographic information in all forms—from paper to digital. Using technology, the center provides access to original historical cartographic material in multiple ways, allowing researchers to view the actual artifact and its digital surrogate.

Centrally located on the fourth floor of Green Library, the Center includes a reception area, circulation and reference services, and a multi-functional space to be used for viewing, research, exhibits, and lecture areas.









SONOMA STATE UNIVERSITY LIBRARY REVITALIZATION

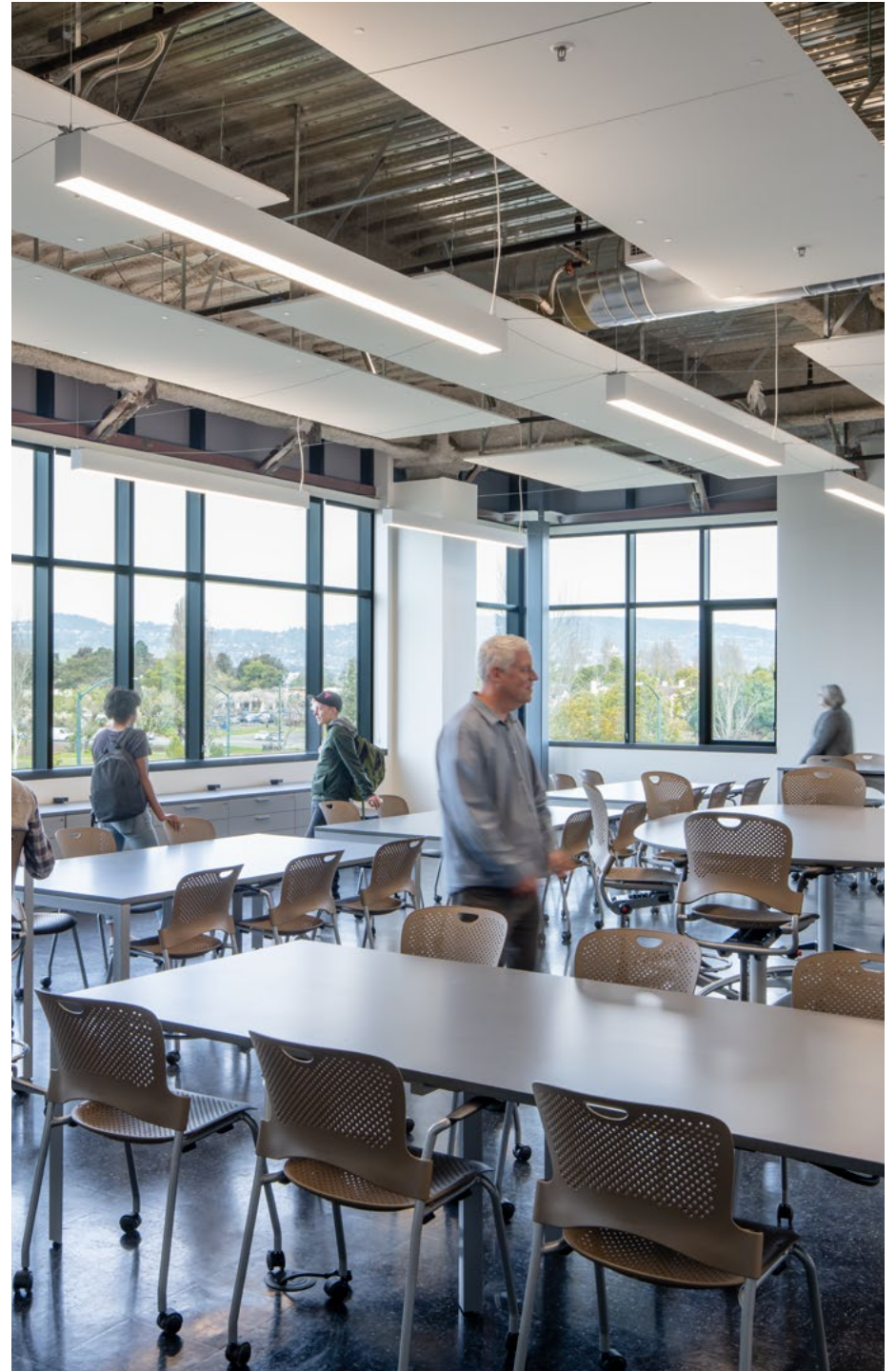
As the silver anniversary of the Jean and Charles Schulz Information Center approaches in 2025, the University engaged Noll & Tam to plan for the Library's next several decades of service. We worked closely with the library to finalize a study which identifies targeted interventions that will create a student-first building that is welcoming, accessible, user-friendly, and offers state-of-the-art study and learning spaces. Our team has already executed one intervention, the creation of a student lounge that has space for study and interaction.

MERRITT COLLEGE HORTICULTURE COMPLEX

Noll & Tam is working with the Peralta Community College District to design the new Horticulture Complex at Merritt College. Their 30+ year old facilities have exceeded their life expectancy and need extensive changes to meet modern codes and instructional expectations. The project will provide more comfortable space for staff and faculty, providing a home base for the programs and welcoming the broader community. The project distributes greenhouse, laboratory, and classroom area to more effectively support programming. We are working closely with BASE Landscape to design new landscape elements to interconnect the existing garden areas and provide usable outdoor work areas for the programs and activities.









COLLEGE OF ALAMEDA NEW CENTER FOR LIBERAL ARTS

Noll & Tam won a design-build competition with Overaa & Co. for the first new building in more than 20 years on the College of Alameda campus. The building is approximately 54,000 square feet, and includes classrooms, offices, humanities/ arts laboratories, and flexible program space. The design acts as a flagship building and anchor to the street-facing side of the campus. The placement of the building takes advantage of solar orientation, while marking the College with a strong presence on Webster Street.

CAPITOLA BRANCH LIBRARY

Noll & Tam worked with Santa Cruz Public Libraries and the City of Capitola to design the new Capitola Library. A strong public outreach process, with presentations and discussions with the community, client stakeholder group, and at City Council meetings, helped us develop the right program and library for the community and the neighborhood. The new library includes flexible, modern spaces in a building that feels unique to Capitola. Given the City's natural setting and beauty, the design incorporates quiet, outdoor reading spaces and a pedestrian connection to the nearby creek. The 11,800-square-foot library opened in June 2021.









LOS ALTOS COMMUNITY CENTER

Noll & Tam designed a new community center to meet the current multi-generational needs of Los Altos. After meetings with the City Council and the Project Task Force, our design for a new 25,000-square-foot building includes spaces for children, teens, and seniors. Flexible spaces indoors and out meet the City's budget, fit into the context and culture of Los Altos, and provide a place that will foster a sense of community now and into the future. The Community Center opened in October 2021.



**CHRIS NOLL, FAIA, LEED AP
PRINCIPAL**

Chris is a licensed architect with more than 40 years of experience. He was the principal-in-charge of the Student Community Center renovations related to UC Berkeley's Lower Sproul Revitalization project, and has completed more than 30 public library projects in California.

CALIFORNIA REGISTRATION

Licensed Architect #C15916

RELEVANT PROJECT EXPERIENCE

UC Berkeley Bancroft Library Renovation/
Doe Library Annex (Ratcliff, Prime)
Stanford University David Rumsey Map Center
UCSF Health Science Instruction & Research
(HSIR) Program Seismic Retrofit and Interior
Renovations



**SCOTT SALGE, AIA, LEED AP
PRINCIPAL**

Scott Salge has 24 years of experience and has successfully managed multiple complex renovation projects with Noll & Tam. Scott brings a very strong understanding of constructability issues, construction practices, and building materials that ultimately informs the development of successful design documents.

CALIFORNIA REGISTRATION

Licensed Architect #C30033

RELEVANT PROJECT EXPERIENCE

UC Berkeley Kresge Library Renovation,
Bechtel Engineering Building
UC Berkeley Career Center
Tenant Improvements
UC Berkeley Mudd Hall Renovation



**JANE CATALANO, IIDA, LEED AP
PRINCIPAL**

As a Principal of the firm and an Interior Designer working on multidisciplinary projects, Jane has the depth and breadth of experience on several project types, with a focus on public work including numerous higher education projects.

ACCREDITATION

National Council for Interior Design Qualification
#025592

RELEVANT PROJECT EXPERIENCE

UCSF Health Science Instruction & Research
(HSIR) Program Seismic Retrofit and Interior
Renovations
College of Alameda New Center for Liberal Arts
Solano College Library/Learning Resource Center



**ERIC SKIBA, AIA, LEED AP BD+C
ASSOCIATE PRINCIPAL**

Eric Skiba is a licensed architect with more than 25 years of experience leading teams of designers, consultants, and clients through all phases of the design process - from conceptual, schematic, design development and construction documentation phases of large-scale academic, commercial, and museum projects.

CALIFORNIA REGISTRATION

Licensed Architect #C28961

RELEVANT PROJECT EXPERIENCE

- UC Santa Cruz Coastal Biology Building*
- UCSF Weill Institute for Neurosciences*
- Solano College Library/Learning Resource Center
- Laney College Library & Learning Resource Center

* WITH PREVIOUS FIRM



**ZACHARY GOODMAN, AIA, LEED AP
ASSOCIATE PRINCIPAL**

Zak recently joined Noll & Tam to play a key role in our K-12 and higher education work. His 30 years of experience and more than 40 DSA-certified projects have honed his ability to integrate the needs of diverse stakeholders through a collaborative design process.

CALIFORNIA REGISTRATION

Licensed Architect #C23826

RELEVANT PROJECT EXPERIENCE

- UC Berkeley Disabled Student Community Center at Hearst Field Annex*
- UC Berkeley QARC & Bridges Student Resource Center at Hearst Field Annex*
- UC Berkeley Sather Tower Lobby Refresh*

* WITH PREVIOUS FIRM



**LEAH MARTHINSEN, LEED AP
ASSOCIATE, PROJECT MANAGER**

Leah Marthinsen is a licensed architect with over 13 years of professional experience on public projects. Leah has kept herself at the forefront of architectural research, leading efforts to capture, refine, and disseminate ongoing design research across project types.

CALIFORNIA REGISTRATION

Licensed Architect #C34315

RELEVANT PROJECT EXPERIENCE

- UC Santa Cruz Science Library Renovation Study*
- UC Santa Cruz Coastal Biology Building*
- UC Berkeley Mudd Hall Renovation

* WITH PREVIOUS FIRM





NOLL
& TAM
ARCHITECTS

